

Bycatch information aboard R/V Hokko-maru during the salmon survey in the
Central Bering Sea Basin during summer, 2015

by

*Orio Yamamura, Tomonori Hamatsu & Shunpei Sato

Hokkaido National Fisheries Research Institute, Fisheries Research Agency, Japan

(*E-mail orioy@affrc.go.jp)

Submitted to the

CBSPC Scientific and Technical Committee Meeting in 2015

Summer high-seas research cruises have been conducted in the Bering Sea Central Basin (BSCB) aboard the Japanese research vessel *Hokko-Maru* during summer 2015, to investigate the biology of Pacific salmon. Research cruise activities included the collection of data on oceanography, zooplankton, salmonid fishes, and other organisms. A surface trawling net, covering approximately 30 m depth from the sea surface, was towed at a total of 17 stations in the BSCB for 1 hour in daytime (Fig. 1). A total of 4 optional tows were made at the stations H08, H12, H16 and H20, with attaching a “live box” (Murphy et al., 2006) to the end of the net for the purpose of collecting live salmon for tagging.

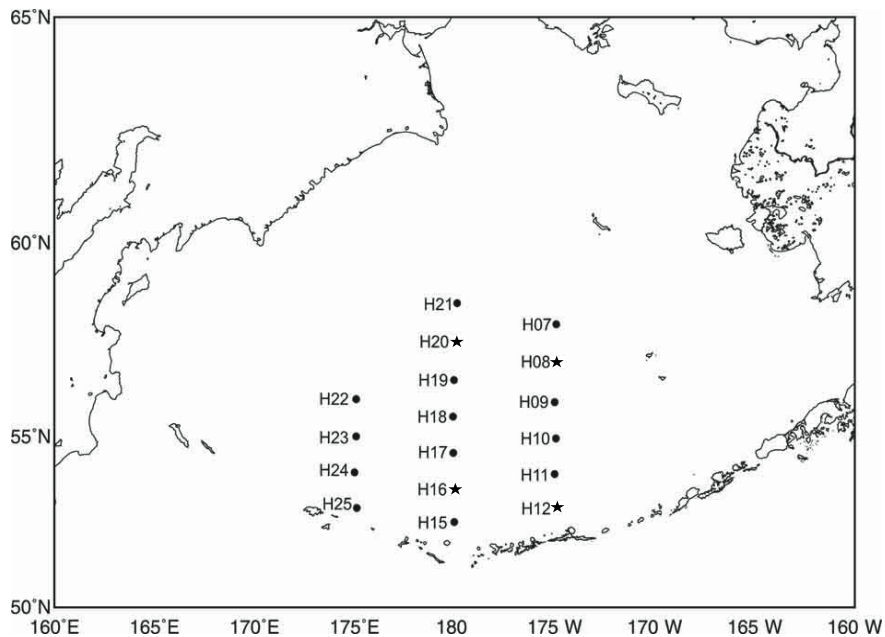


Fig. 1. Map showing sampling stations of R/V *Hokko Maru* in the Bering Sea Central Basin, summer 2015. At the 4 stations shown by star, trawling net was towed with being

attached with “live box”.

Of the four stations, considerable numbers of juvenile walleye pollock were collected at 2 stations: 375 and 131 at H08 (August 3) and H20 (August 5), respectively. At these stations, 1(H08: SL= 78mm) and 2 (H20: body size unknown) pollock were collected also by the tows with regular cod-end. The body length of pollock collected by the live box tows ranged 56 – 76 mm and averaged (\pm S.D.) at 68.8 ± 3.9 mm for H08, and ranged 47 – 74 mm and averaged at 64.0 ± 4.8 mm for H20, indicating that the pollock collected were age-0 (Fig. 2).

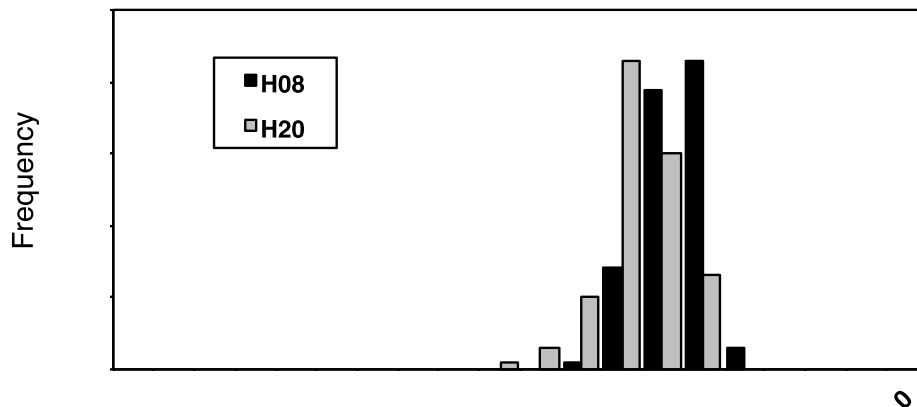


Fig. 2. Body length frequency distribution of walleye pollock collected by live box.

Reference

Murphy, J.M., R.V. Walker, J.H. Moss, K. Ciciel, N.D. Davis, K.W. Myers, M. Fukuwaka, and S. Urawa. 2007. Releases of high-seas salmon tags by U.S. vessels in 2006. NPAFC Doc. 1038. 5 p. Auke Bay Laboratories, Alaska Fisheries Science Center, NOAA Fisheries, Juneau, AK. (Available at <http://www.npafc.org>)